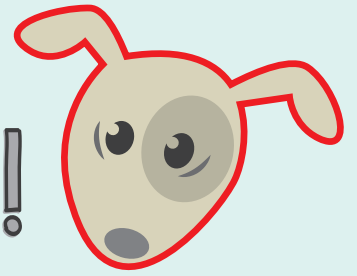


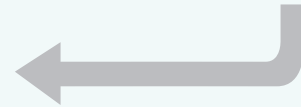
HOW TO KNOW IF...

IT'S TOO HOT FOR ME!



EVEN ON A WARM DAY WITH THE WINDOWS CRACKED, THE TEMPERATURE INSIDE A PARKED CAR CAN REACH...

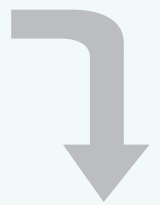
100 DEGREES
IN LESS THAN
5 MINUTES.






HEAT STROKE WARNING SIGNS:

Restlessness, thirsty, thick saliva, heavy panting, very tired, lack of appetite, dark tongue, rapid heartbeat, fever, vomiting, diarrhea, and lack of coordination.

WHAT DO I DO IF I SEE A DOG IN A HOT CAR?



-  Write down the car's information (color, model, make, and license plate number)
-  Have the owner paged in the nearest buildings or call local police or animal control.
-  Don't leave the dog until the situation has been resolved.*

* If the authorities are unresponsive or too slow and the dog's life appears to be in danger, find a witness (or several) who will back up your assessment, take steps to remove the suffering animal from the car, and then wait for authorities to arrive.

OUTSIDE TEMPERATURE	INSIDE CAR TEMPERATURE
---------------------	------------------------

70°	= 100°
-----	--------

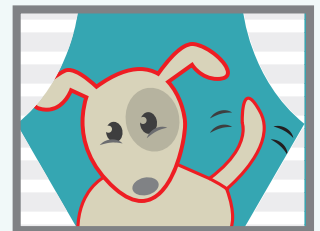
75°	= 110°
-----	--------

80°	= 120°
-----	--------

85°	= 130°
-----	--------

90°	= 140°
-----	--------

LEAVE ME AT
HOME
WHERE I AM



COOL & SAFE

